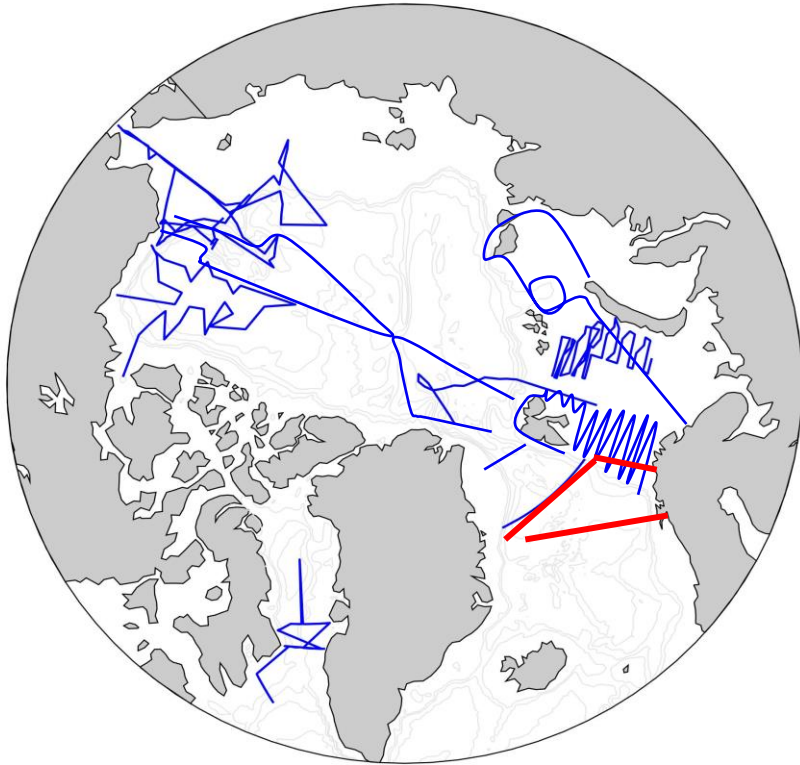




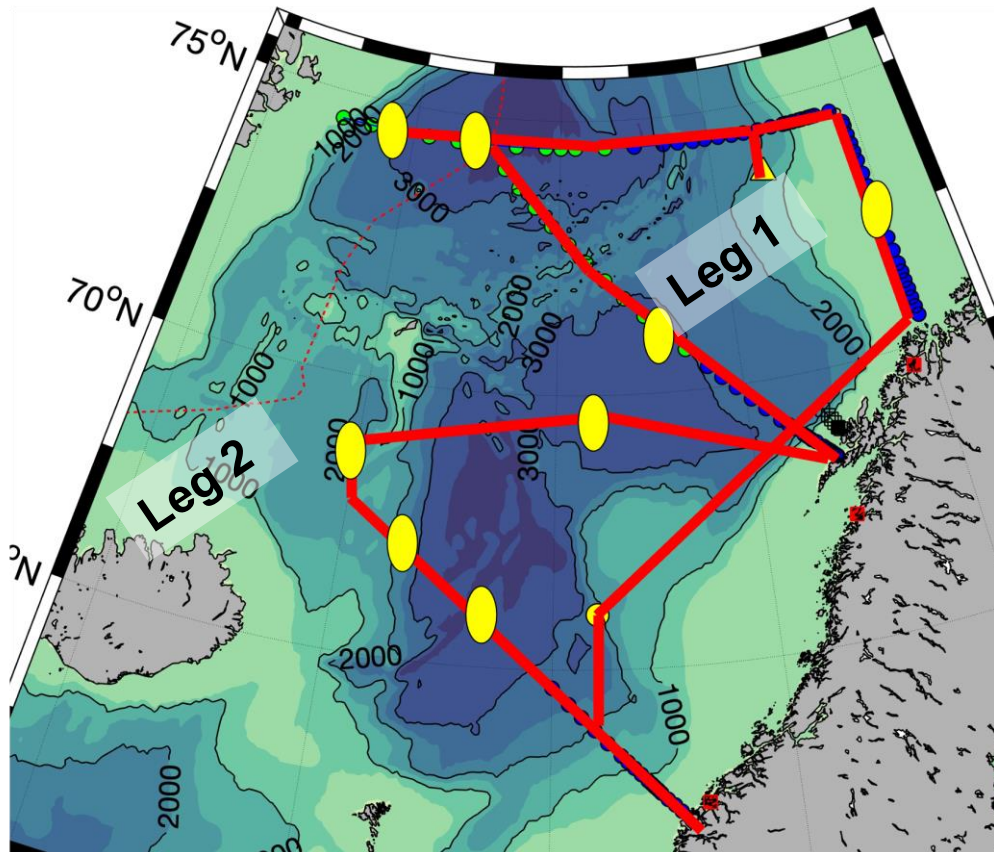
Synoptic Arctic Survey et al. cruise to the Greenland Sea, 2022

ARE OLSEN, UNIVERSITY OF BERGEN





Synoptic Arctic Survey et al



- IMR Repeat Sections
- Kosmomolets monitoring
- NorArgo 2
- NorEMSO
- GO SHIP A29 Section
- Synoptic Arctic Survey

Dates: May 24th to ~ June 9th (Leg 1)

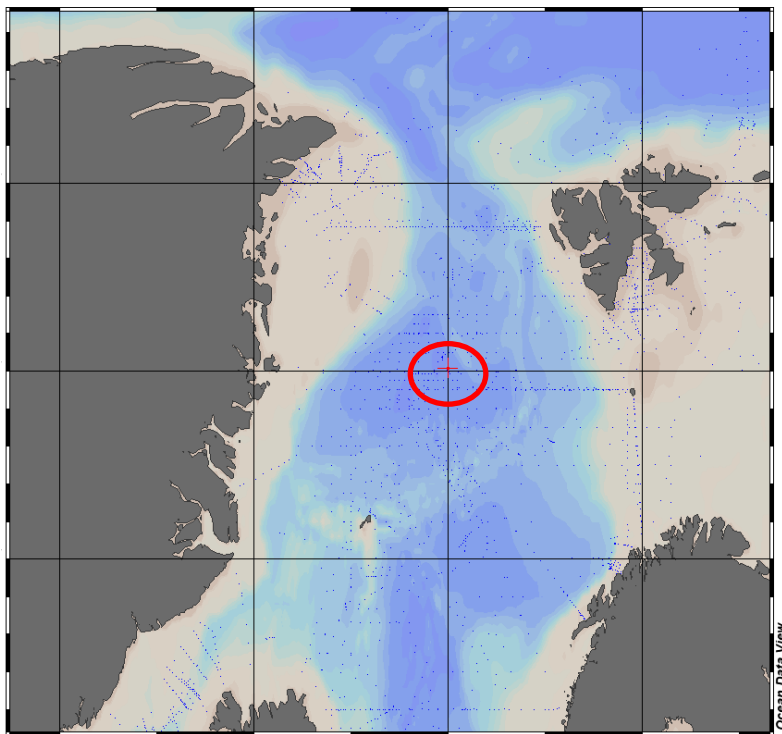
Measurements

- Temperature & Salinity (IMR)
- Nutrients (IMR)
- Chlorophyll (IMR)
- CTD and Winkler Oxygen (IMR)

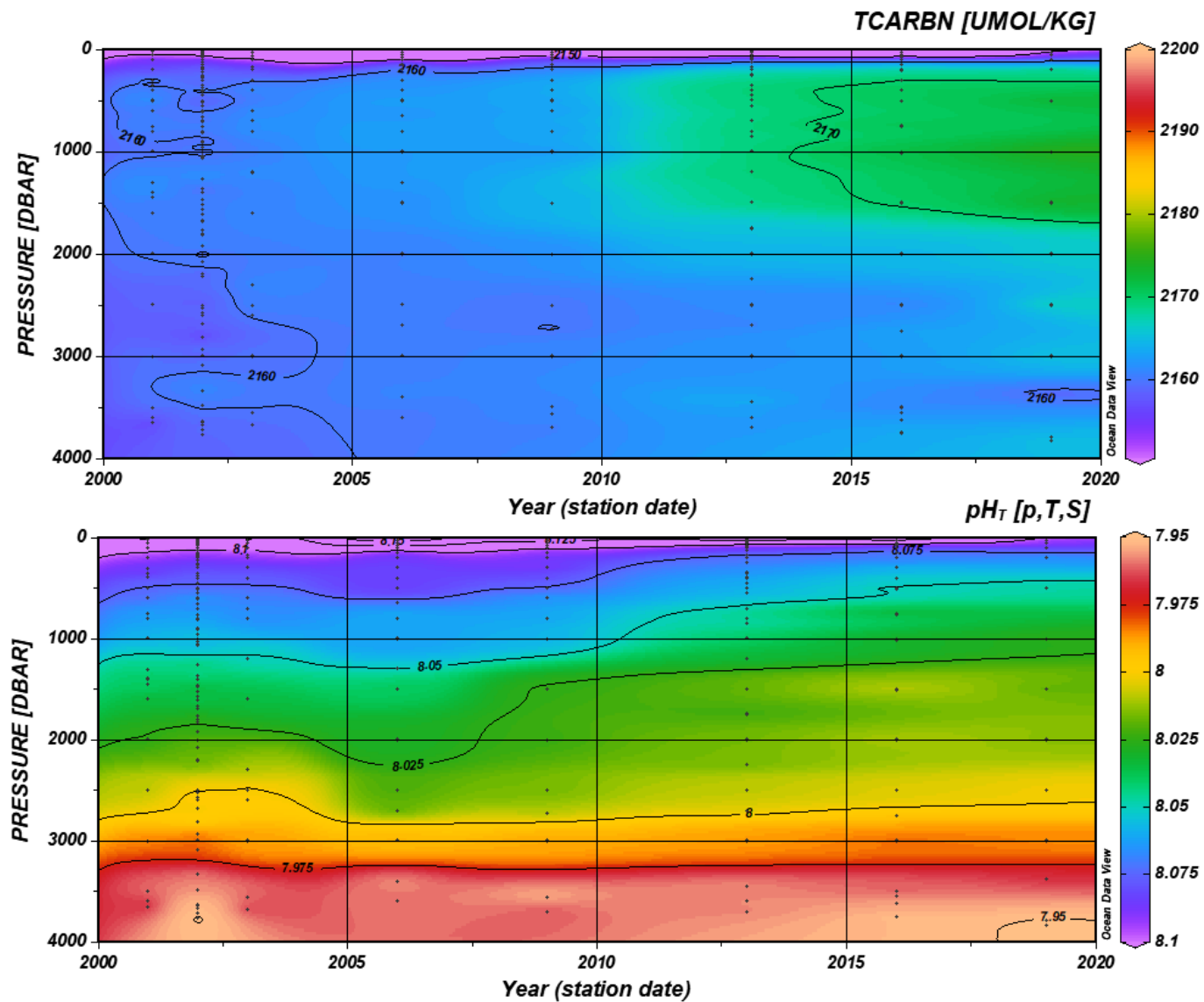
- Dissolved Inorganic Carbon (UiB + NORCE)
- Total Alkalinity (UiB + NORCE)
- CFC-12 & SF₆ (UiB + NORCE)

- Zooplankton (IMR)





Ocean Data View





Thank you!