

Methane Dynamics from Arctic Shelves to Deep Basins

Cedric Magen, Jiayang Sun, Laura Lapham



UNIVERSITY OF
MARYLAND

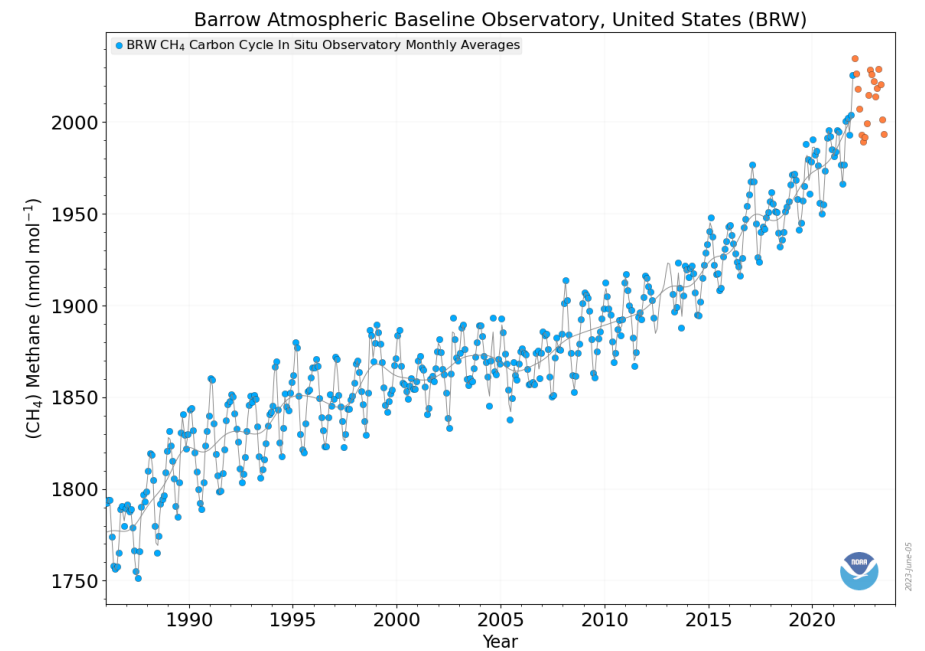
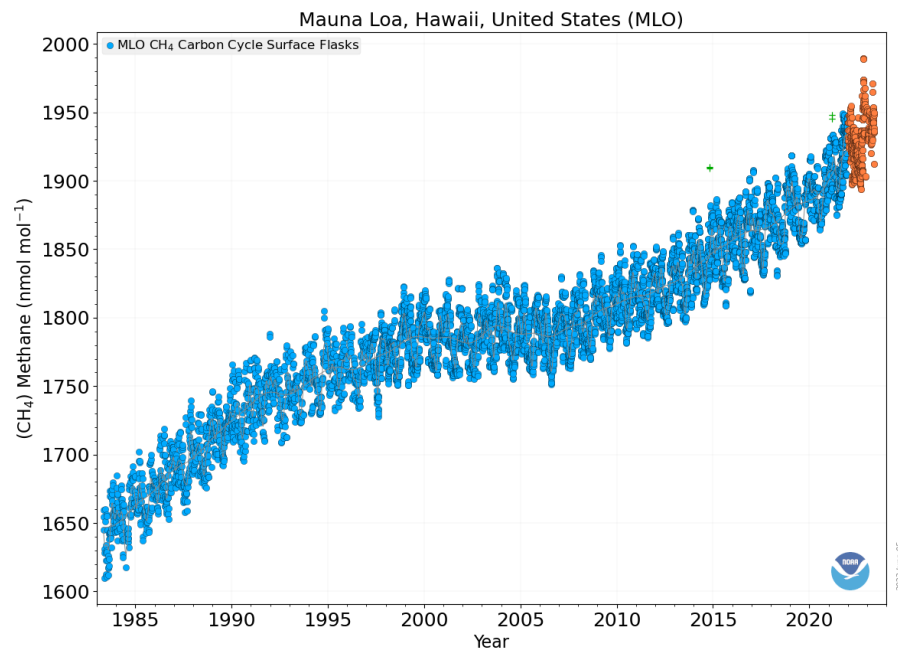


University of Maryland
CENTER FOR ENVIRONMENTAL SCIENCE

Why are we looking at methane?

It's the **2nd most important gas responsible for the greenhouse effect**
(17% of warming effect is due to methane)

And it's **rising.**



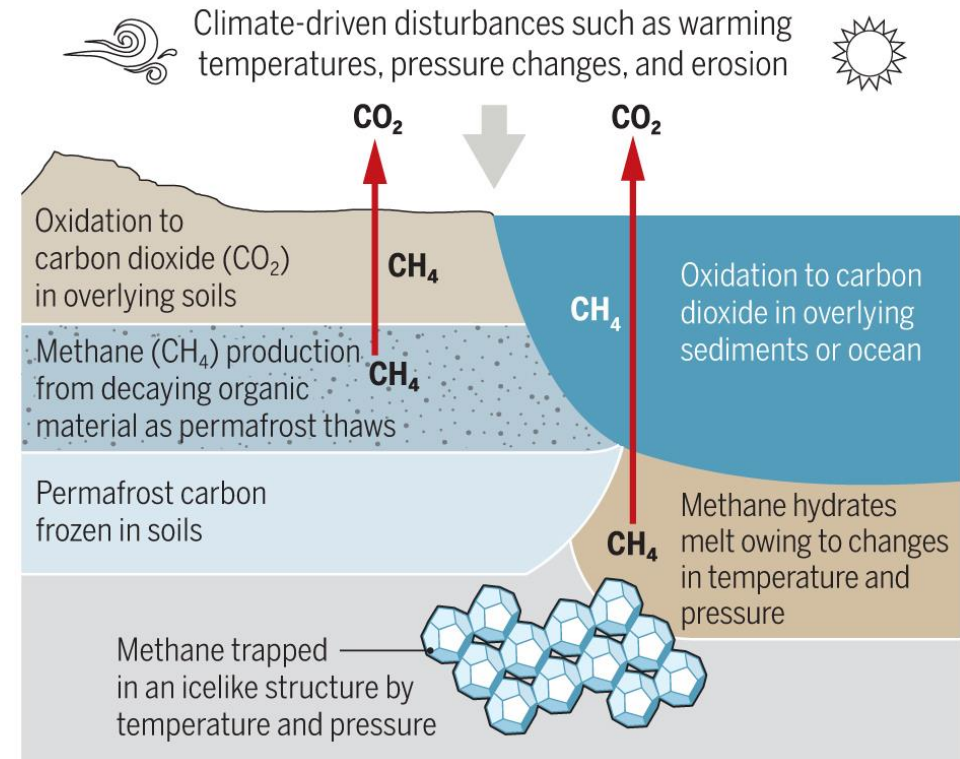
For reference: Pre-industrial revolution concentrations ~700 ppb

Origin of methane in the Ocean

- Methane is issued from **sediments** for the most part
- It is a product of Organic Matter degradation → **Biogenic** methane
- It is a product geological processes (methane associated to oil fields, natural gas)
→ **Thermogenic** methane (millions of years old)

Most old methane is oxidized before it can reach the atmosphere

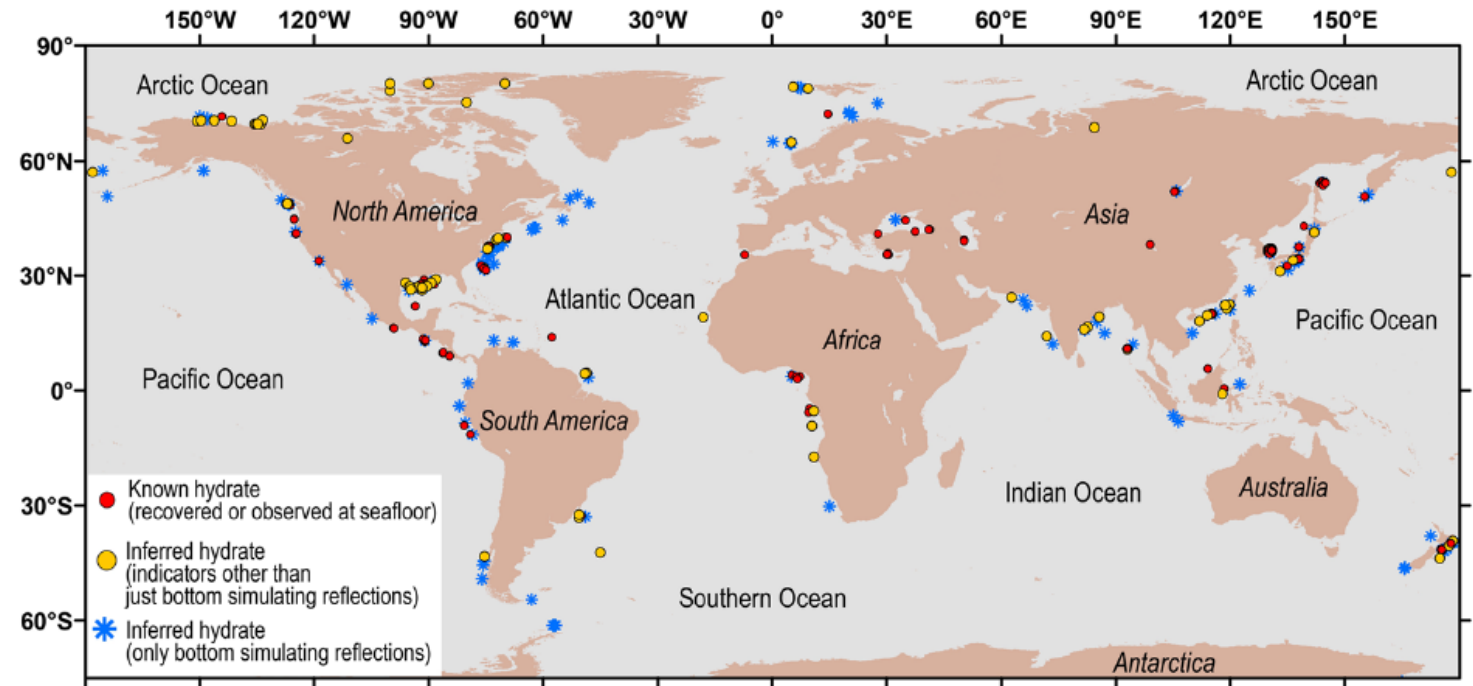
Whether released from melting methane hydrates or produced from thawing permafrost, to reach the atmosphere, old methane must avoid being oxidized to carbon dioxide by microorganisms.



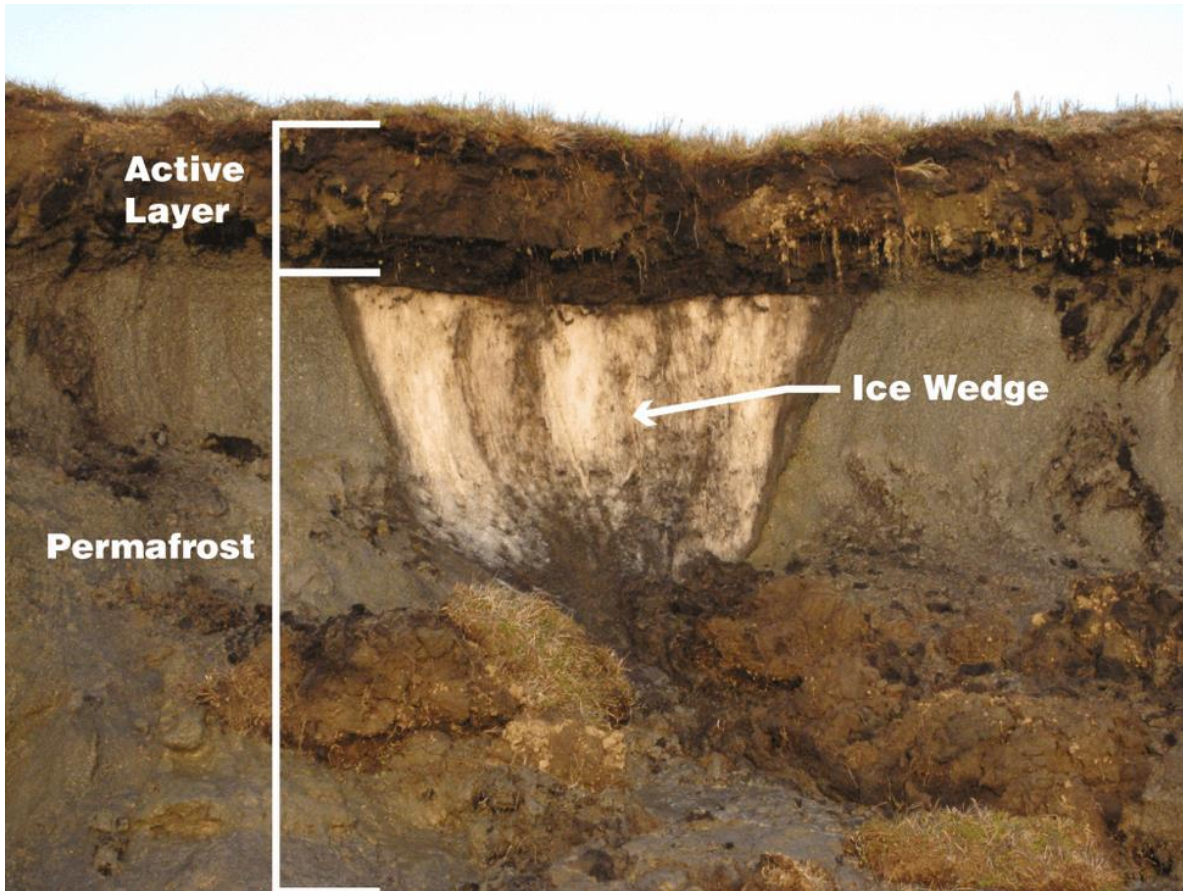
Dean, 2020, Science

How about Methane in the Arctic?

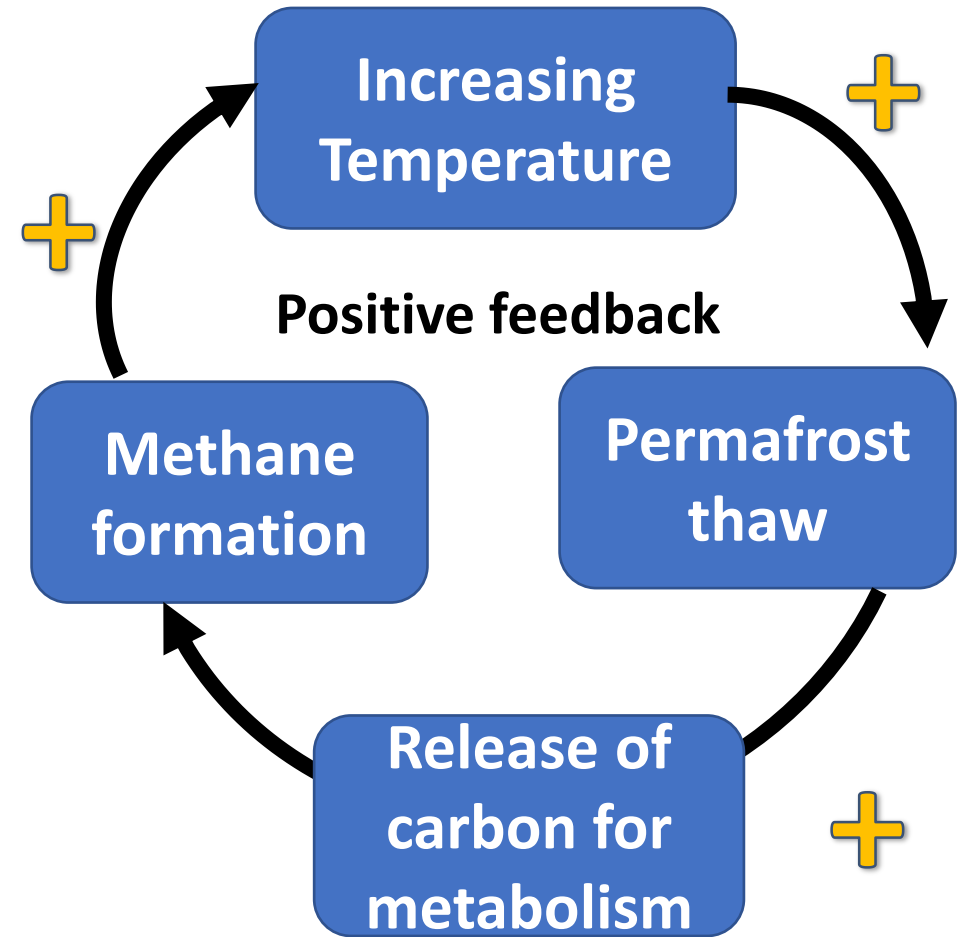
- Arctic Ocean is huge, not very productive, so not prone to lots of methane production in sediments. With the exception of shelves?
- However, temperature and pressure conditions are such that **methane hydrates** can be formed within a few meters of water.



The problem: Arctic temps increasing; thawing permafrost from top down

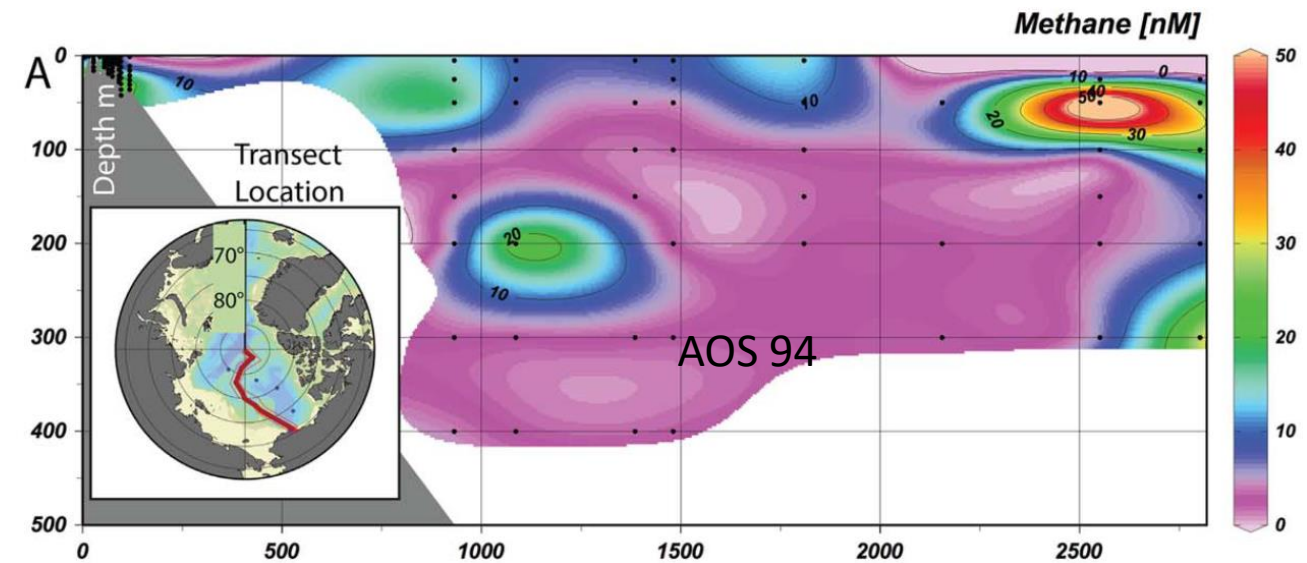
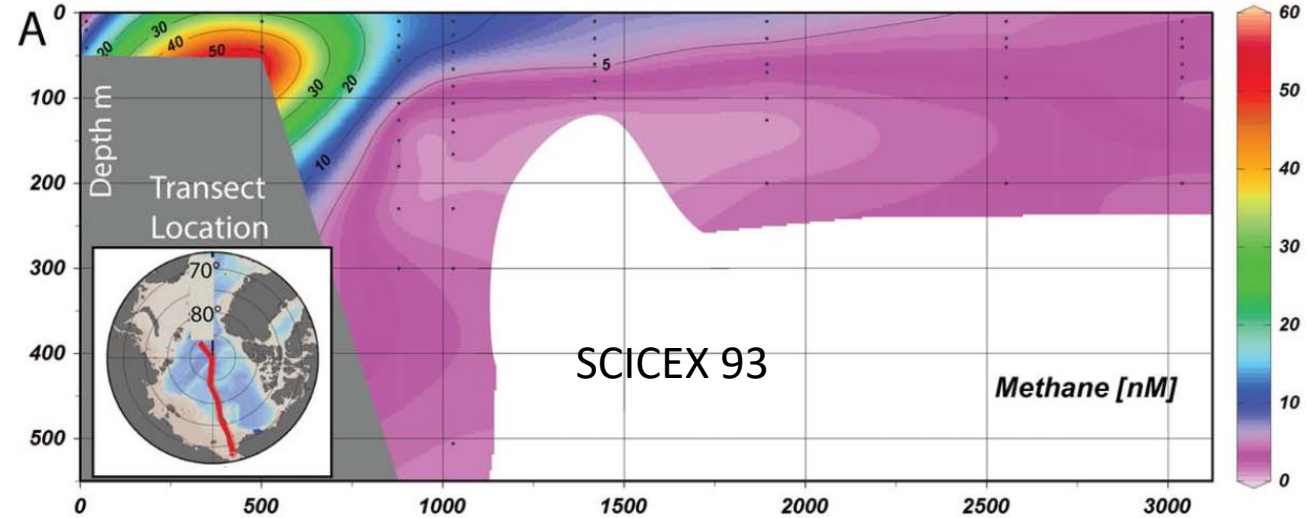
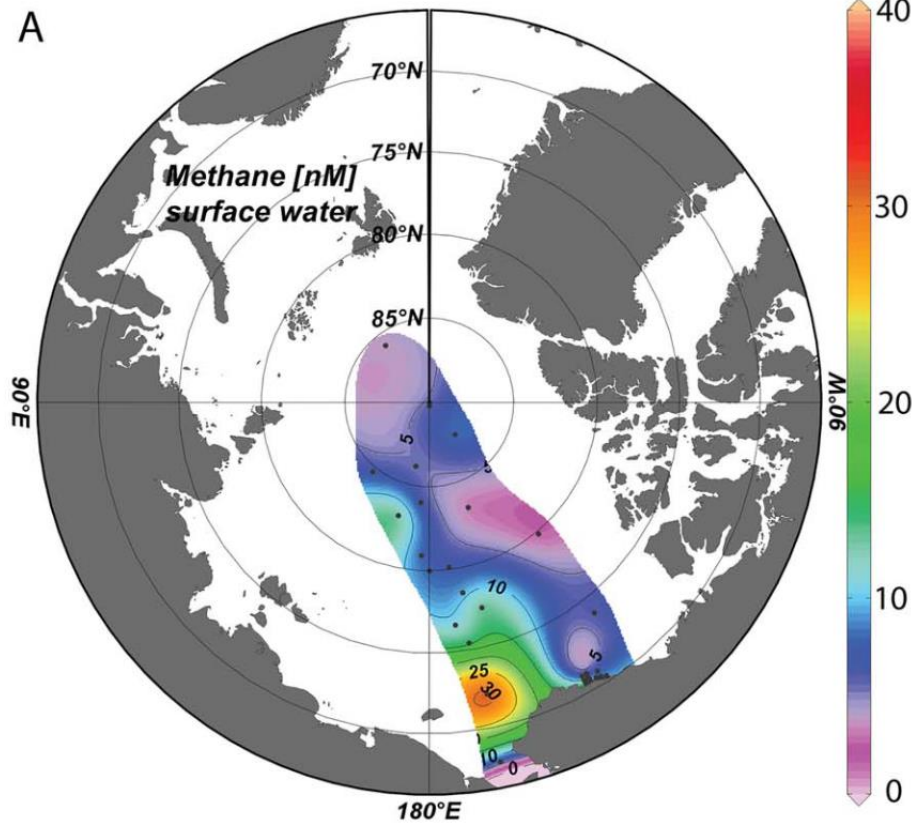


Active layer is getting thicker with warming



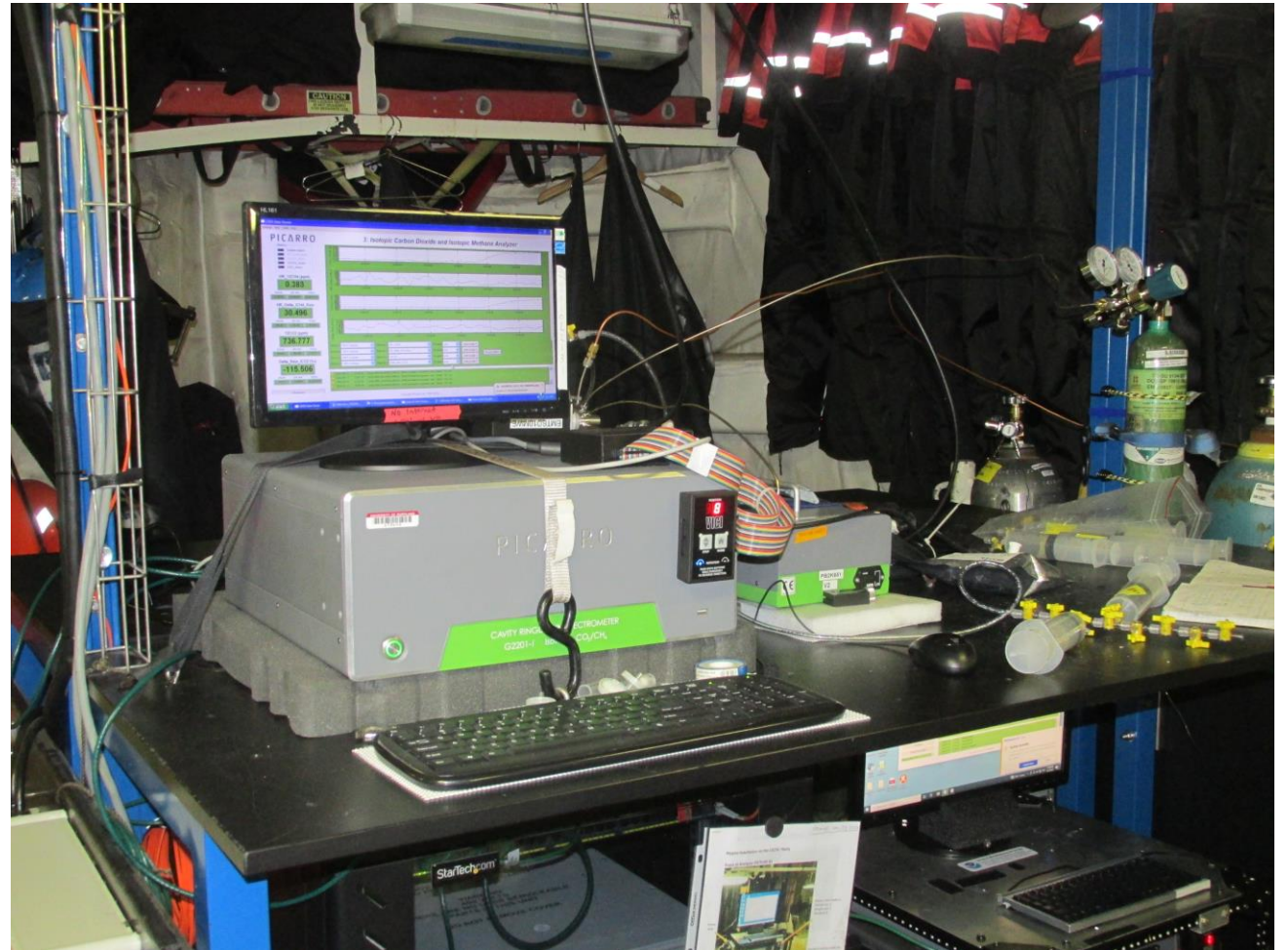
→ Does global warming lead to melting gas hydrates and permafrost in underlying sediments?

Latest investigations in the Deep Arctic Basins

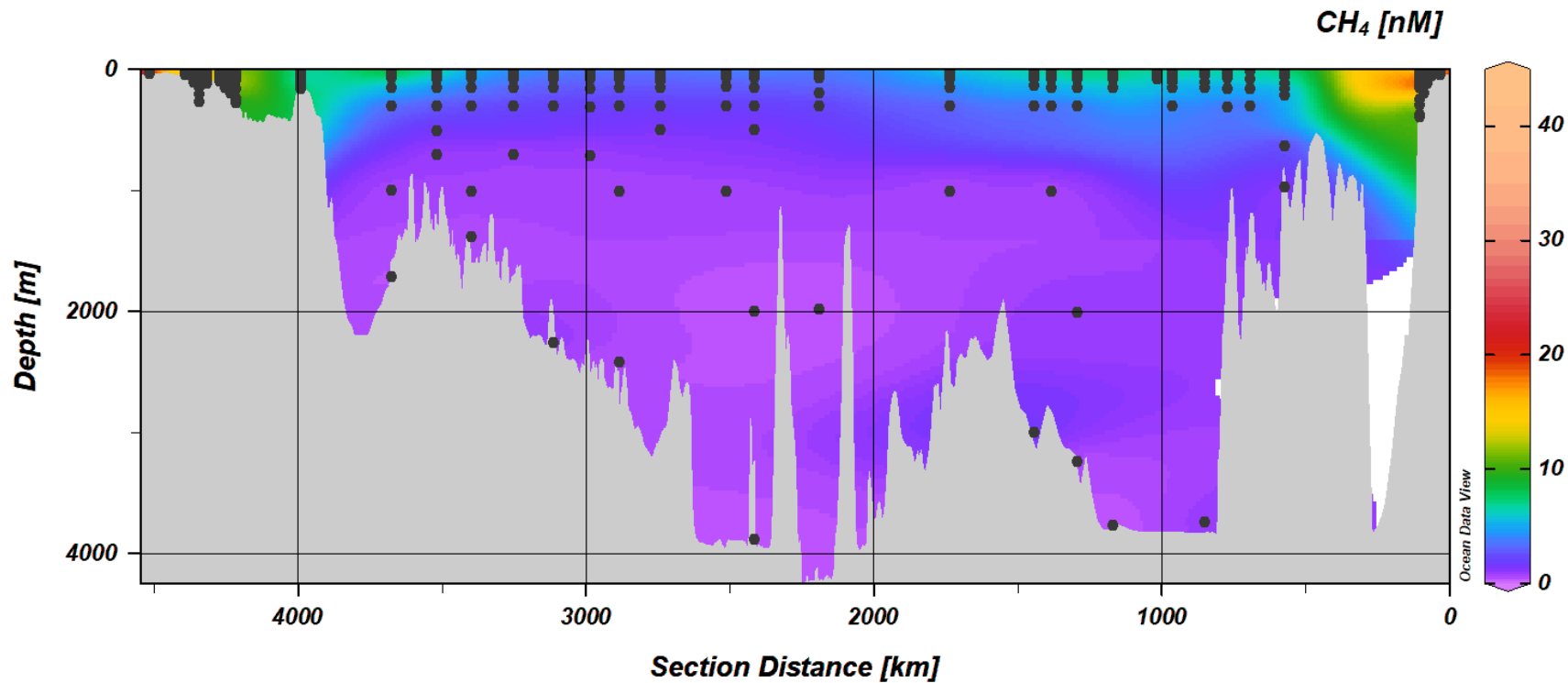
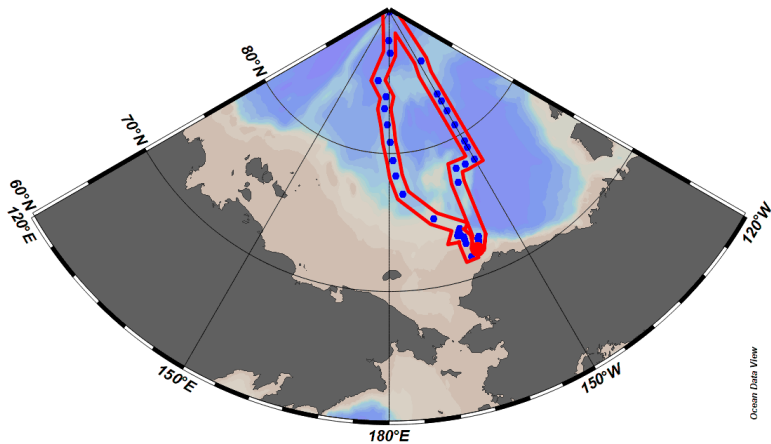


How we measure methane dissolved in water

- Retrieve water from rosette and collect in capped vial
- Inject methane-free headspace gas
- Shake water and headspace gas to reach **equilibrium**
- We analyze the headspace by injecting into instrument (CRDS, Gas chromatograph, etc.)
- The equilibrium between headspace and water has been experimentally determined as a function of temperature and salinity.

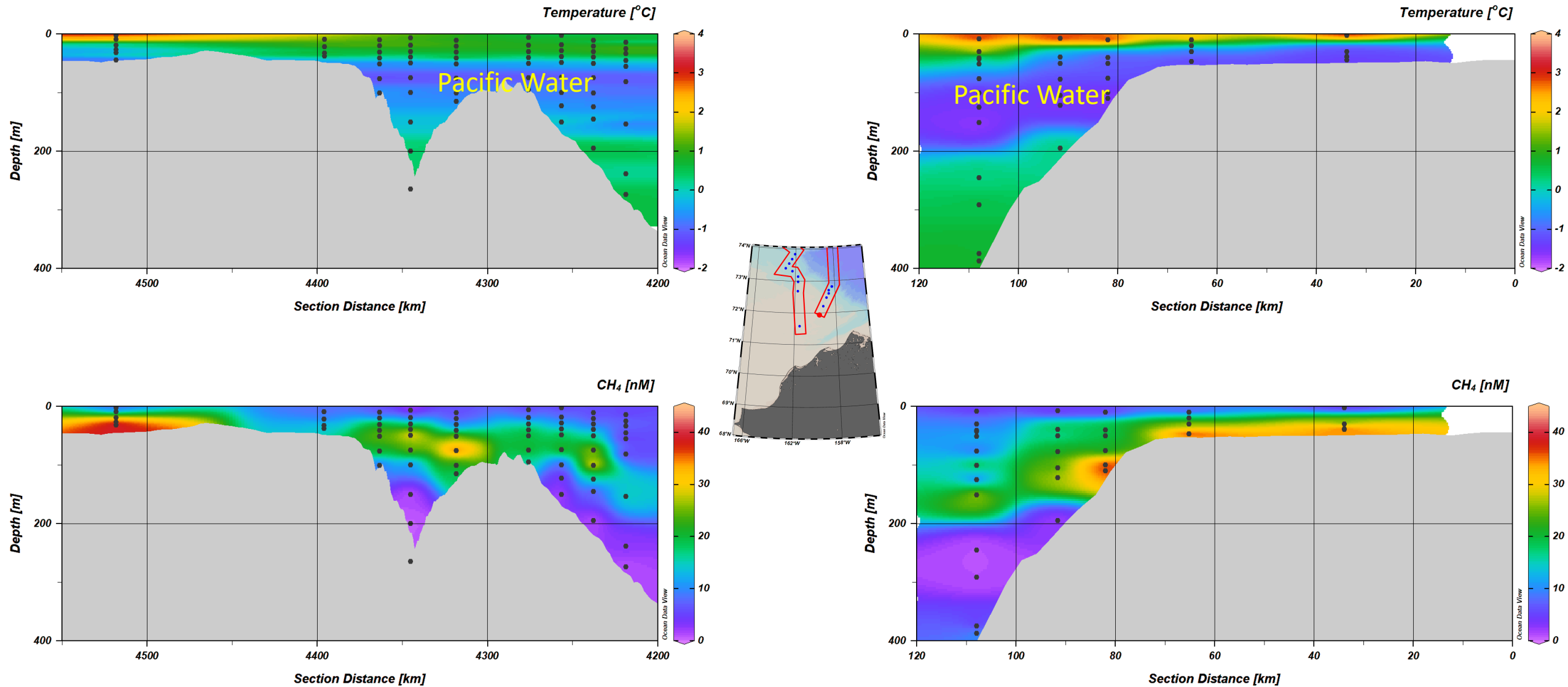


Methane in deep Basins and Alaska Shelf waters in 2022



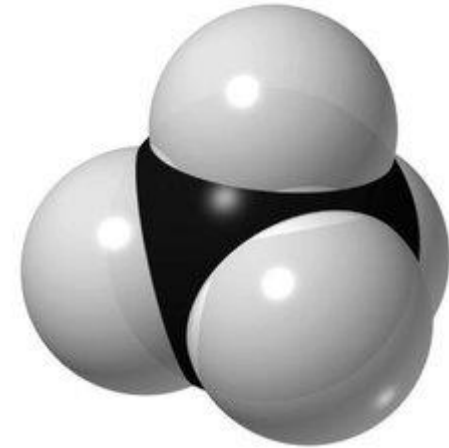
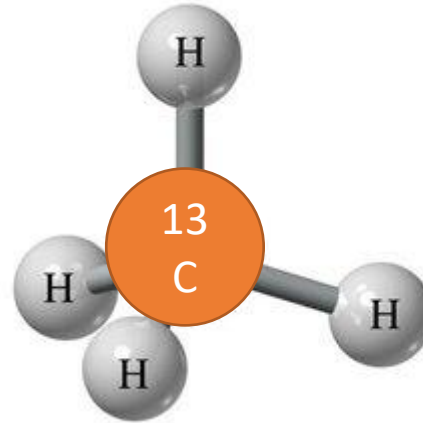
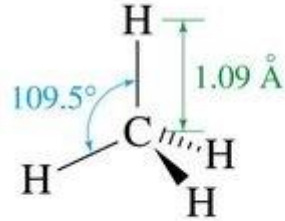
Healy cruise track, Oct – Sep 2022

Methane over Alaska Shelf



Where does this methane come from?

- We use **stable isotopes** of methane as a tracer

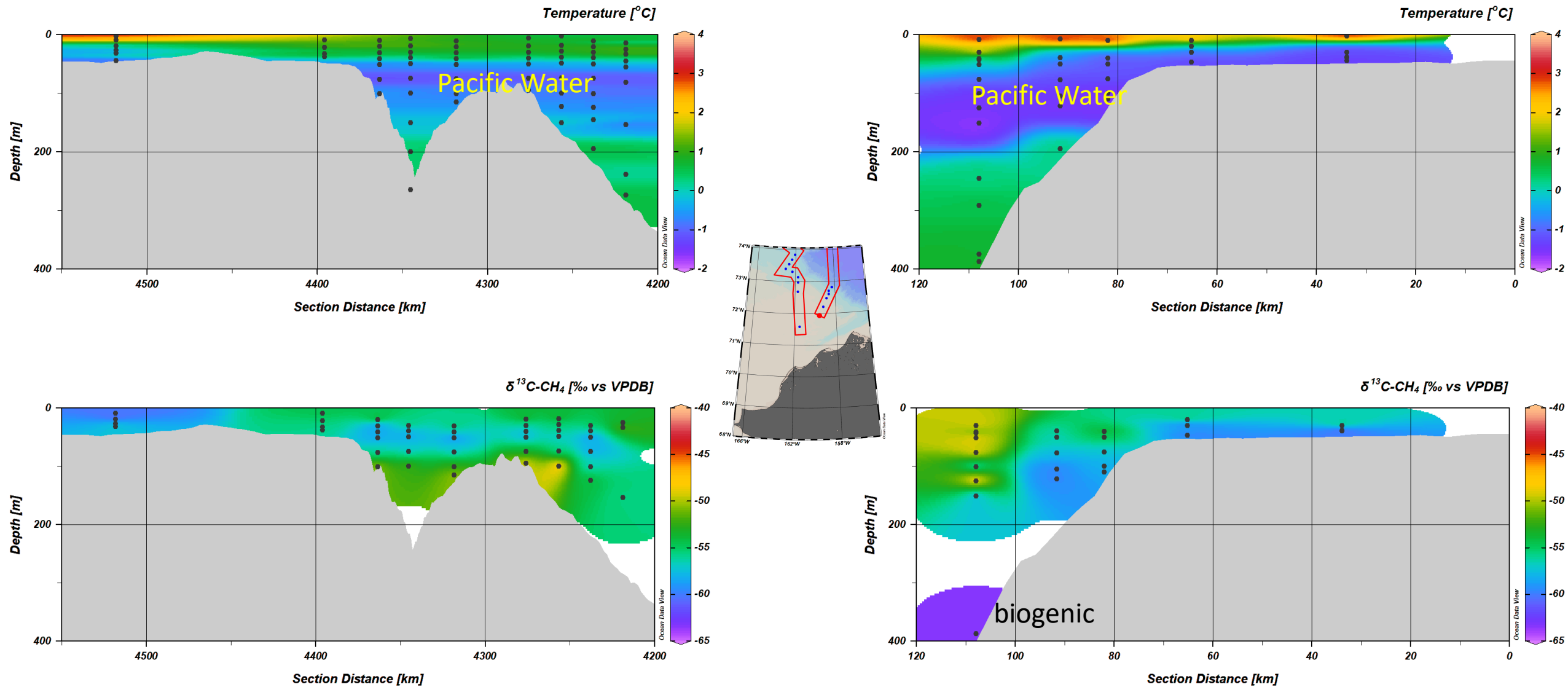


- **Biogenic** methane is isotopically LIGHT → $\delta^{13}\text{C-CH}_4 < -60 \text{ ‰ vs VPDB}$

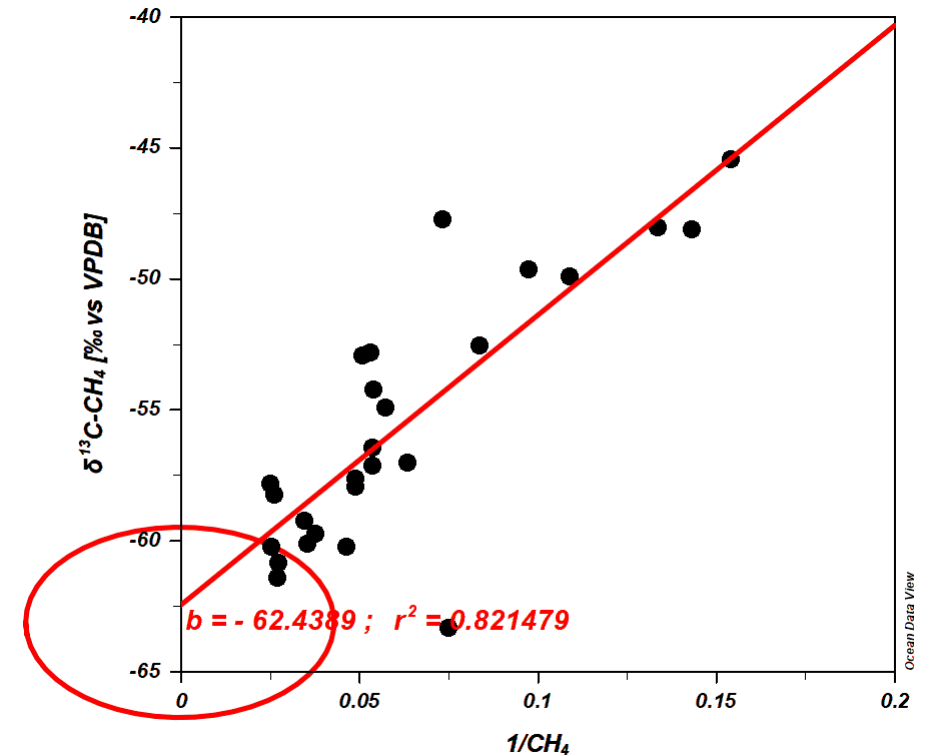
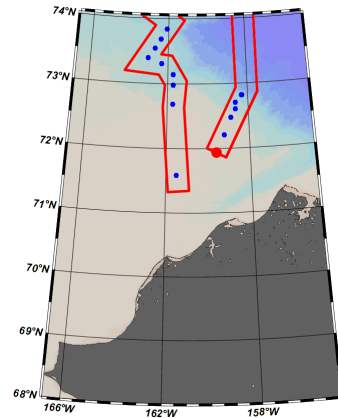
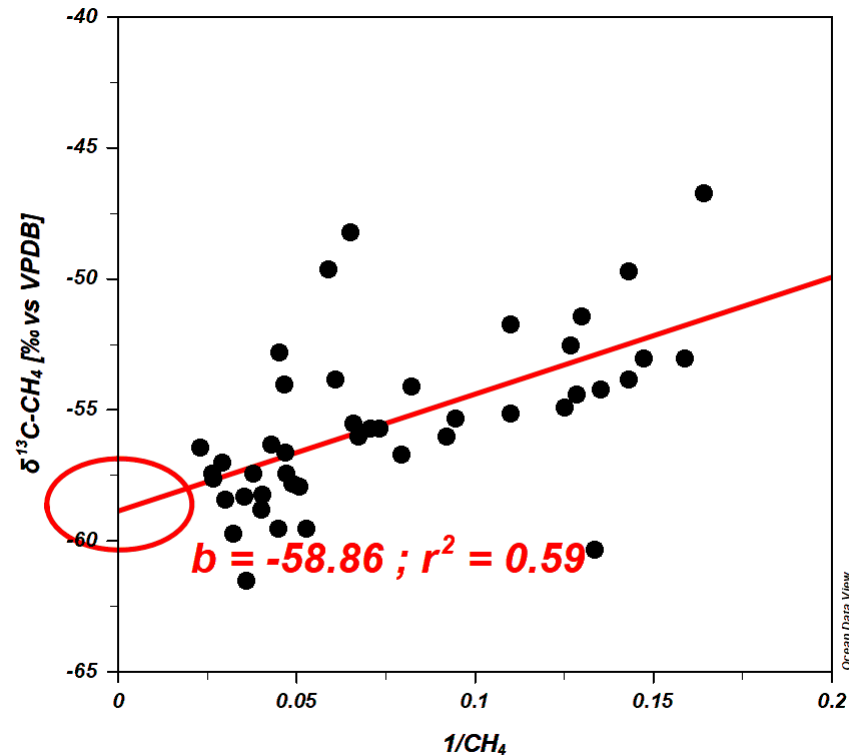
Vs

- **Thermogenic** Methane is isotopically HEAVY → $\delta^{13}\text{C-CH}_4 > -45 \text{ ‰ vs VPDB}$

Methane stable isotopic signature



Finding methane end-member using Keeling plots.



- On both transects, the end-member signatures are very similar (~ -60 ‰)
- Consistent with a **unique source of methane**
- Consistent with a **biogenic source of methane** : possibly melting methane hydrate, or submarine permafrost, or methane locally produced (methanogenesis) in sediments and diffusing to the water column.

Remaining questions and future work

- Calculate the flux of methane at the air-sea interface.
 - Is the Arctic Ocean a sink or a source for the Atmosphere?
- Assess sources and fate of methane:
 - Can we differentiate methane from hydrates, permafrost, early diagenesis?
 - Can we assess the extent of methane oxidation in sediments and water column?
- **Paper:** Fluxes and transport of methane in the Chukchi and Beaufort Seas. In progress for JGR-Oceans
- Data will be available with the **Arctic Data Center**

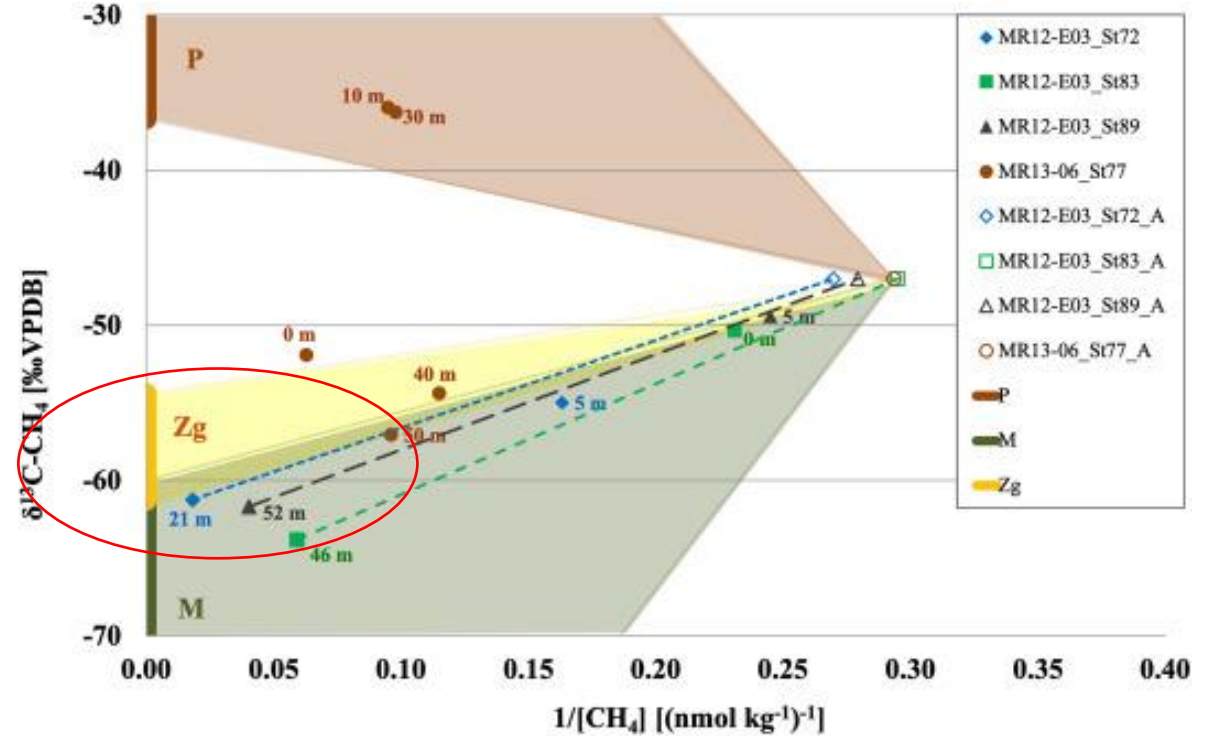
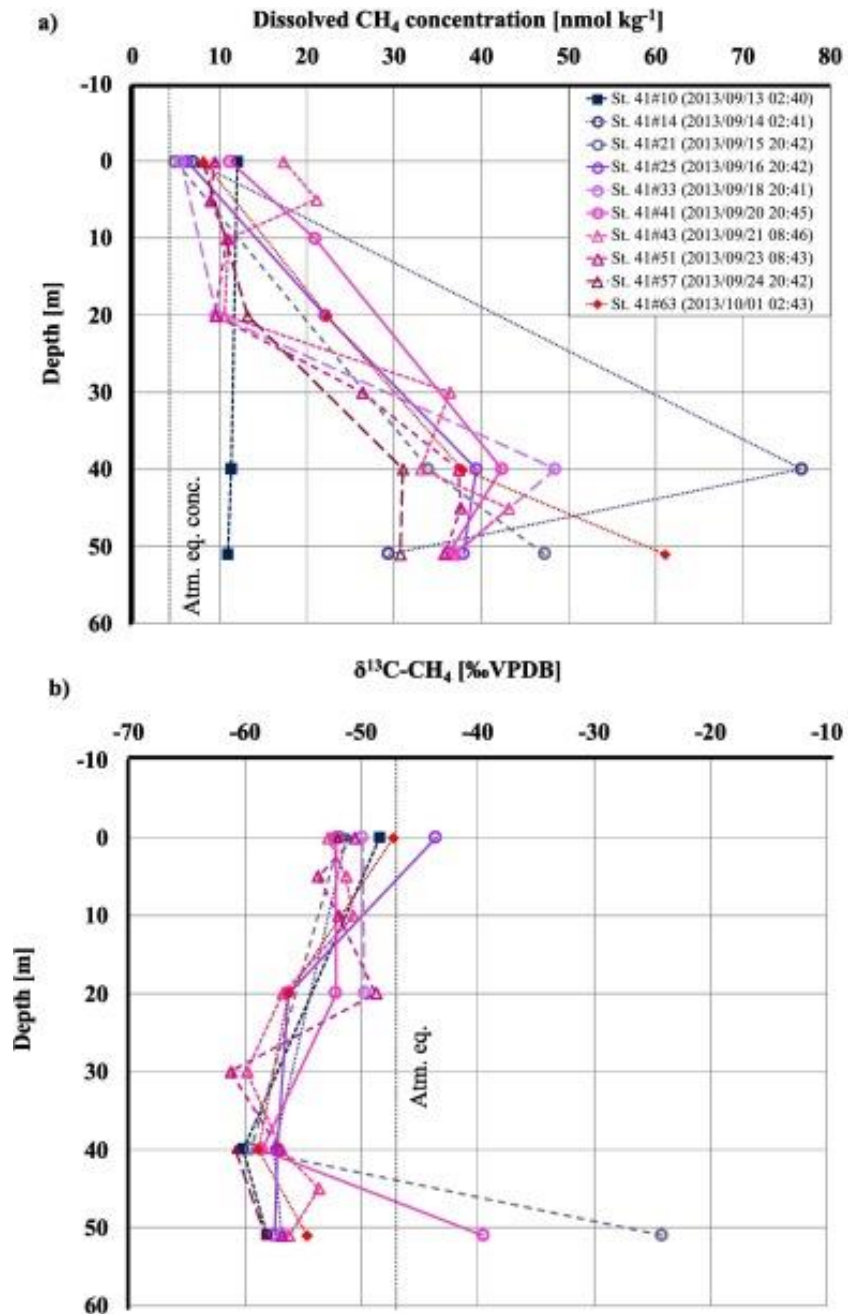


UNIVERSITY OF
MARYLAND



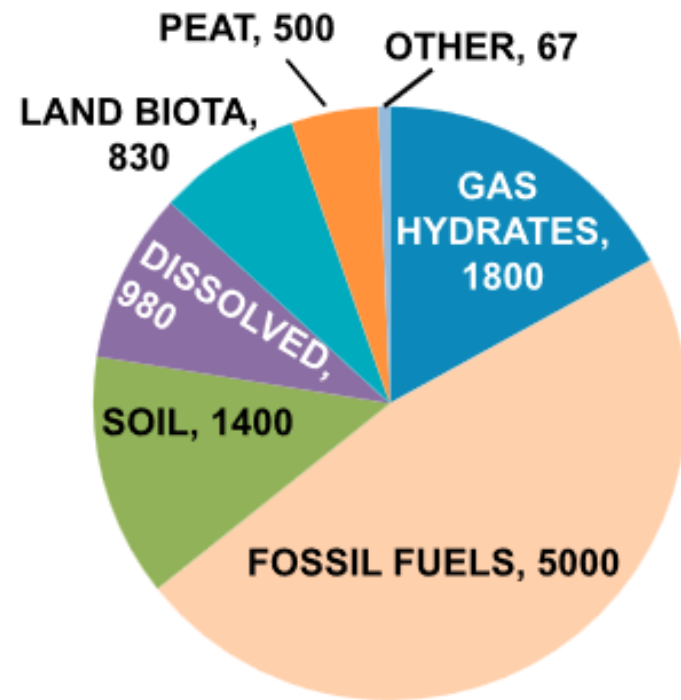
University of Maryland
CENTER FOR ENVIRONMENTAL SCIENCE

New data from the Chukchi Sea



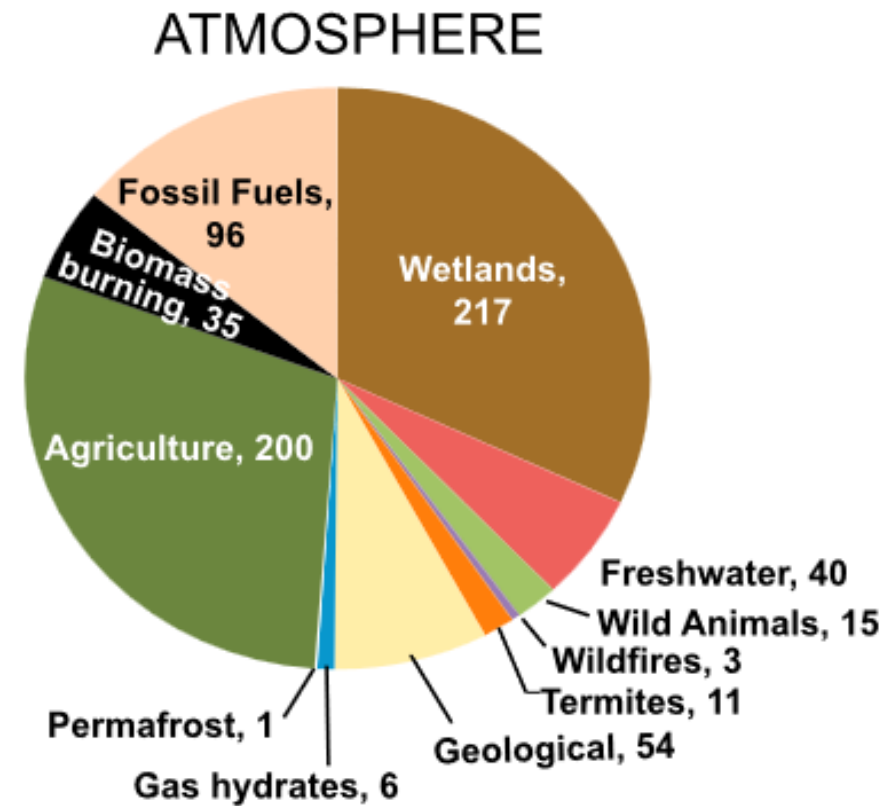
Place of hydrates in global carbon cycle

B.

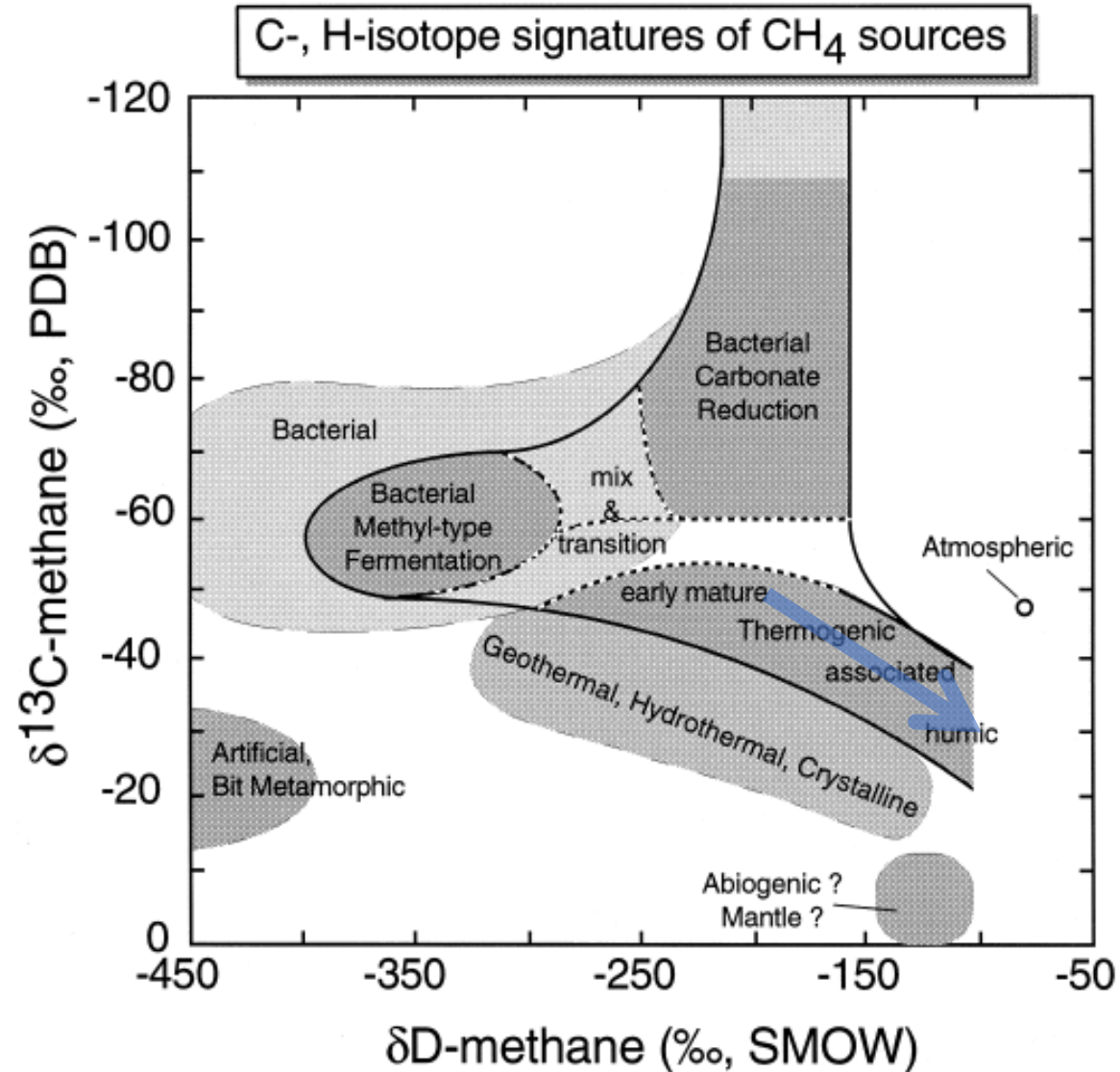


Units: Gt C

C.



C and H isotope variations of methane in natural environments



thermogenic
dD similar to
dDorg = -80

How is methane produced: microbes (methanogens)

